

Storm Water Pollution Prevention Clean Water: Our Only Choice

The City of Bartlett has two drainage systems – the sewers and the storm drains. The storm drain system was designed to prevent flooding by carrying excess rainwater away from streets, homes, and businesses. Because the system contains no filters, it also serves the unintended function of carrying urban pollution straight into our streams and eventually the Mississippi River.

This pamphlet provides examples of how you can reduce or eliminate pollution from entering our streams from “storm water” or “urban runoff”.

Rain, industrial and household water mixed with urban pollutants creates storm water pollution. The pollutants include: oil and other automobile fluids, paint and construction debris, yard and pet wastes, pesticides and litter.

Urban runoff pollution flows to the Mississippi River through the storm drain system that takes water and debris straight from the streets to our streams. Each day tremendous amounts of polluted urban runoff enters our streams untreated, leaving toxic chemicals in our creeks and rivers and tons of trash along their banks.

Urban runoff contaminates our streams and rivers, harms aquatic life and increases the risk of flooding by clogging our storm drains and catch basins. Overall, storm water pollution costs us millions of dollars per year.

These Best Management Practices (BMPs) will help reduce storm water runoff pollution and ensure cleaner streams and rivers, and a cleaner City of Bartlett. For more storm water information, call the Storm Water Coordinator (901)385-6499.

For more information please visit our website at: <http://www.cityofbartlett.org> or visit <http://tn.gov/environment/water.shtml>

Hazardous Spill Response

City of Bartlett Fire Department
911 or (901)385-5555

Recycling and Household Hazardous Waste Disposal

Memphis and Shelby County Household Hazardous
Waste Collection Facility
(901)222-7729

To Report Illegal Dumping

City of Bartlett
(901)385-5555

To Report a Drainage Problem

Department of Public Works
(901)385-5570

Storm Water Program Information

Department of Engineering and Utilities
(901)385-6499

Mosquito Control

Memphis and Shelby County Health and Sanitation
Department
(901)222-2300

This pamphlet is one of a series of pamphlets describing storm water pollution prevention measures. Other pamphlets can be obtained from the Department of Engineering and Utilities and include:

Landscaping, Gardening & Pest Control

Food Service Industry

Automotive Maintenance & Car Care

Heavy Equipment & Earth Moving Activities

Detention Basin Maintenance

For more information or assistance, call or write:

City of Bartlett
Department of Engineering & Utilities
6382 Stage Road
Bartlett, TN 38134-3739
901-385-6499
<http://www.cityofbartlett.org>

Storm Water Best Management Practices (BMPs)



Home Repair & Remodeling

Brochure 6

Homeowners
Do-It-Yourself Remodelers
Do-It-Yourself Painters
Do-It-Yourself Landscapers

City of Bartlett Storm Water Management Division
6382 Stage Road
Bartlett, TN 38134-3739
(901) 385-6499

City of Bartlett Department of Code Enforcement
6382 Stage Road
Bartlett, TN 38134-3739
(901) 385-6425

1. Household Hazardous Waste Disposal

Household toxins – such as common household cleaners, paint products and motor oil – can pollute our streams and the Mississippi River, as well as groundwater, if not disposed of as hazardous waste.

- ◇ Minimize your use of hazardous chemicals by using safe and effective non-toxic substances. Buy the least toxic products available such as those labeled “non-toxic”, “non-petroleum based” and “free of ammonia, phosphates, dye or perfume.”
- ◇ Store your unused household chemicals securely and dispose of periodically at the Memphis and Shelby County Household Hazardous Waste Collection Facility. Call (901)222-7729 for more information.
- ◇ Take used motor oil to an oil recycling center or an auto parts store offering recycling services.

2. Concrete and Masonry

Fresh concrete and mortar application materials can wash down or blow into the street, street gutter or storm drains posing a hazard to aquatic life. Also, these materials could clog the storm drain system causing flooding to you and your neighbors.

- ◇ Do not mix up more fresh concrete or cement than you will use.
- ◇ Store bags of cement and plaster under cover protected from rainfall, runoff and wind and away from street gutters and storm drains.
- ◇ Never dispose of cement washout or concrete dust onto driveways, streets, street gutters or storm drains.



3. Painting

All paints and solvents contain chemicals that are harmful to aquatic life. Toxic chemicals can come from liquid or solid products or from cleaning residues on rags. It is especially important to prevent these chemicals from entering storm drains.

Paint Cleanup

- ◇ Never clean brushes or rinse paint containers into a street, street gutter or storm drain.
- ◇ For oil-based paints, paint out brushes to the maximum extent possible. Clean with thinner and then filter and reuse thinner.
- ◇ For water-based paints, paint out brushes to the maximum extent possible, then wash in the sink.
- ◇ When thoroughly dry, used brushes, empty cans (lids off), rags and drop cloths may be disposed of as trash.

Paint Removal

- ◇ Chemical paint stripping residue is a hazardous waste and should be taken to the Household Hazardous Waste Collection Facility.
- ◇ Sweep paint chips and dust and dispose of in trash.

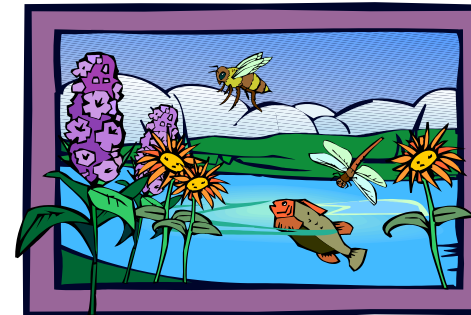
Paint Recycling

- ◇ Use leftover paint for touch-ups or dispose of it at the Household Hazardous Waste Collection Facility.

4. Landscaping & Gardening

Intensive gardening and landscaping increases the likelihood that garden chemicals and soil will wash into storm drains. Pesticides and herbicides will not only kill garden invaders, they also harm beneficial insects, poison fish and contaminate ground and surface water.

- ◇ Use organic or non-toxic fertilizers and pesticides. Do not fertilize or use pesticides near ditches, street gutters or storm drains.
- ◇ Store pesticides, fertilizers and other chemicals in a covered area to prevent runoff.
- ◇ Do not blow, sweep or rake leaves or grass clippings into street gutters, ditches or storm drains. In addition to polluting our water, they could plug the drainage ways and cause flooding for you and your neighbors.
- ◇ The City of Bartlett has curbside pickup of bagged yard waste. Or compost the clippings at home and use the compost around your plants.
- ◇ Conserve water by using drip irrigation, soaker hoses or micro-spray systems.



5. Construction

Sediment from excavation and other construction projects is the most common pollutant washed from work sites. Sediment entering the river through storm drains harms aquatic life and disrupts the food chain upon which both fish and people depend.

General Practices

- ◇ Keep all construction debris away from the street, street gutter and storm drain. Look for and clean up material that may have traveled away from your property.
- ◇ Keep materials out of rain by storing them indoors or outdoors with a secure roof or plastic sheeting.
- ◇ Contact the Code Enforcement Department, (901)385-6425, for permit requirements.

Erosion Control

- ◇ Schedule grading and excavation projects for dry weather.
- ◇ Cover excavated material and stockpiles of asphalt, sand etc. with plastic tarps.
- ◇ Prevent erosion by planting fast-growing annual and perennial grasses. These will shield and bind the soil.
- ◇ Obtain a copy of the *Erosion and Sediment Control Handbook* from the Tennessee Department of Environment and Conservation. This handbook provides detailed examples of how to control erosion from your project. http://www.tn.gov/environment/wpc/sed_ero_controlhandbook/